

Rectangular weights

Heavy capacity

FEATURES:

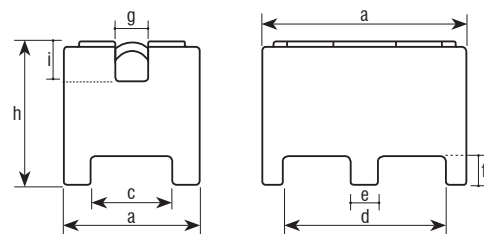
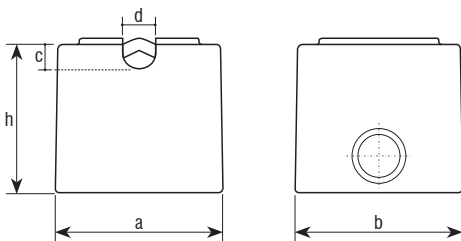
- For crane hook:
Weights for scales calibration.
Lacquered cast iron.
M2 class.
500 kg and 1000 kg.
- For crane hook and lift trucks:
Weights for scales calibration.
Lacquered cast iron.
M2 class.
From 100 kg to 2000 kg.



Crane hook



Crane hook and lift trucks



Dimensions (mm)

Capacity	a	b	c	d	h
500 kg	560	560	100	110	255
1000 kg	560	560	100	110	485

Dimensions (mm)

Capacity	a	b	c	d	e	f	g	h	i
100 kg	340	225	120	190	-	100	80	280	100
200 kg	465	340	190	255	-	100	80	291	100
500 kg	750	500	300	600	100	100	120	314	140
1000 kg	750	500	300	600	100	100	120	500	140
2000 kg	1000	750	450	800	100	100	120	500	140

M2 Class

Code #	260011	260012	260013	260014	260015	260016	260017
Weight	500 kg	1000 kg	100 kg	200 kg	500 kg	1000 kg	2000 kg
Application	Crane hook		Crane hook and lift trucks				

Official certificates ENAC

Code #	Accessories description
900010	Masses from 100 kg to 2000 kg. M2 class